



Andean Explorer Train by Belmond

Andean Plains and Islands of Discovery Route 1 night: Arequipa-Puno-Cusco every Saturday

Belmond (formerly Orient-Express) trains are synonymous with luxury and unforgettable memories, and their trains in Peru are no exception. Almaz Journeys is proud to offer these incomparable rail itineraries, and we can help you build these rail journeys into your custom, private journey to Peru.

Train journeys aboard the Belmond Andean Explorer promise countless memories to treasure.

Day 1 – Saturday

Board the train in the Baroque city of Arequipa. Take some time to get comfortable in your cabin and acclimatize to the indulgent atmosphere of the train as you begin your journey towards Puno. Then take your seat in one of the elegant dining cars for your first dinner on board. Relax and savor refined Andean dishes served with contemporary flair.

After dinner, why not head to the bar car and enjoy a cocktail as you get to know your fellow travelers.

Day 2 - Sunday

Awake early for a spellbinding experience as you witness the sunrise across Lake Titicaca. Breakfast is served on board, the perfect set up for a day full of adventure. This afternoon we explore Lake Titicaca, the highest navigable lake in the world. The beautiful lake is home to many diverse islands, each boasting a unique way of life.

First we take a traditional boat to Uros, a man-made island artfully constructed from interwoven reeds which are constantly being replenished. The people who live on the island use the same reeds to create homes, ships and tools. Continue your exploration to Taquila Island, notable for its stunning agricultural terraces. The people here follow a social code that has been barely touched by time, and their handwoven fabrics are regarded as the best in Peru. Enjoy lunch at Collata beach, followed by a performance from local dancers and a demonstration of artisans at work.

Return to the station at the lake for a delicious afternoon tea. Board the train and relax as the journey continues on to Cusco. As evening descends, enjoy another tempting dinner in the dining carriage.



Day 3 – Monday

Wake to a delicious breakfast, accompanied by stunning views as the train sets off from Marangani. Along the way, disembark to visit Raqch'i. Once an important Inca settlement, today this fascinating archaeological site boasts many architectural gems. After, enjoy a delicious brunch in the bar cars.

All too soon, we arrive at Cusco, the former capital of the Inca empire. Bid farewell to the crew and disembark.

Continue your Peruvian journey by exploring more of Cusco or continuing onto the Sacred Valley for some active adventure. Almaz Journeys can help you find the perfect fit for you.



**Map of the Andean Explorer Complete Route
(this departure ends at Cusco)**



Pricing

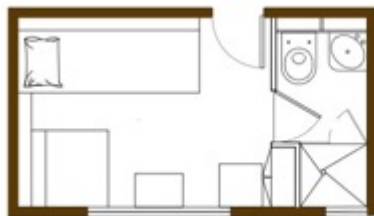
*Includes train accommodations, all meals described, and all included excursions.
Some private excursions are possible at an additional cost.*

Bunk Bed Cabin	\$2,100 per person Double	\$4,200 per person Single
Twin Bed Cabin	\$2,300 per person Double	\$4,025 per person Single
Suite	\$2,550 per person Double	\$4,465 per person Single

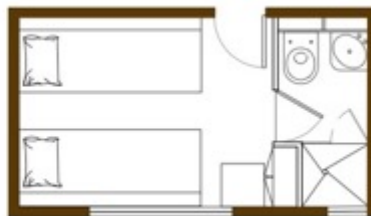
Facts & Figures

Max number of guests	48
Dining cars	2
Observation Car	1
Lounge Car	1
Spa car	1
Deluxe Double Bed Cabins	2
Junior Double Bed Cabins	6
Twin Bed Cabins	11
Bunk Bed Cabins	5

CABINS



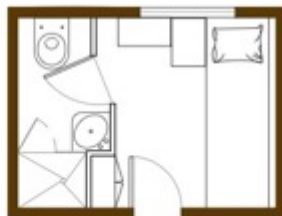
DAY CONFIGURATION



NIGHT CONFIGURATION

TWIN BED CABINS

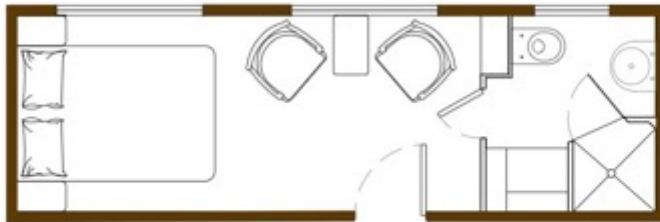
- Larger en-suite cabins with day and night configuration, all lower level
- 2 single beds, side by side in night position
- 1 banquette and one seat in day position
- Wardrobe
- Shower, washbasin, WC
- Total area of each compartment:
3.6 metres x 2.05 metres = 7.4 m²



BUNK BED CABINS

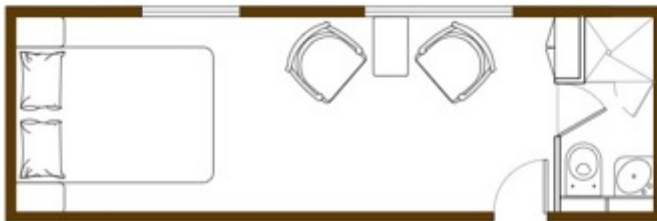
- Smaller en-suite cabins with over and under bunk-beds
- 2 single beds (upper and lower berth) night position
- Banquette in day position
- Wardrobe
- Shower, washbasin, WC
- Total area of each compartment:
2.7 metres x 2.05 metres = 5.5 m²

CABINS



DELUXE DOUBLE BED CABINS

- Largest en-suite cabins on the train with double bed
- Sitting area (2 seats table)
- Long wardrobe
- Shower, pedestal, washbasin, vanity, WC.
- Total area of each compartment:
6.4 metres x 2.05 metres = 13.1 m²



JUNIOR DOUBLE BED CABINS

- Largest en-suite cabins on the train with double bed
- Sitting area (2 seats table)
- Wardrobe
- Shower, washbasin, WC.
- Total area of each compartment:
6.4 metres x 2.05 metres = 13.1 m²





111. S. Dakota Avenue | **Luxury Latin America Travel**
Tampa FL 33606 USA | www.almazjourneys.com