



Andean Explorer Train by Belmond

Peruvian Highlands Route

2 nights: Cusco-Lake Titicaca-Arequipa (departs every Thursday)

Belmond (formerly Orient-Express) trains are synonymous with luxury and unforgettable memories, and their trains in Peru are no exception. Almaz Journeys is proud to offer these incomparable rail itineraries, and we can help you build these rail journeys into your custom, private journey to Peru.

Step aboard this luxury Peru train and explore this breathtaking country in unrivalled style. Experience vibrant cities and spellbinding natural wonders. Embark on the ultimate Peruvian escape and journey from Cusco to Arequipa in style, visiting charming Puno and the majestic Lake Titicaca. Tours each day let you uncover the hidden gems of this fascinating land.

Day 1 - Thursday

Board the Belmond Andean Explorer train in Cusco, the ancient capital of the Inca empire. Settle down and unwind in your luxurious cabin as the train begins its journey southeast towards Puno with a late morning departure. Savor your first lunch on board in one of the elegant dining cars. Refined Andean specialties are served with contemporary flair. After, disembark to visit Raqch'i. Once an important control point for the Incas, it is today a fascinating archaeological site brimming with history. Return to the train just in time for canapés in the bar cars. Soak up the sensational sunset over La Raya Mountain range, before preparing yourself for an elegant dinner on board. Afterwards, perhaps head to the bar car and chat with your fellow travelers as the train continues to Lake Titicaca, where it will stable for the evening.

Day 2 - Friday

Awake early to catch the breathtaking sunrise across Lake Titicaca, before enjoying a delicious breakfast on board. Today's tours explore the eclectic beauty and rich diversity of life on Lake Titicaca, the largest lake in South America and home to many islands. First, you'll take a traditional boat ride out to the Uros Islands, stunning man-made lands carefully created from woven reeds that are constantly being replenished.

Continue to Taquile island, a beautiful island with a way of life barely touched by time. Enjoy a private lunch on Collata Beach, with demonstrations from traditional dancers and artisanal workers.

Enjoy afternoon tea at the station before departing on to Arequipa. Later anticipate a final delicious dinner before retiring to your cabin for a restful night.



Day 3 - Saturday

Enjoy breakfast before setting off on an early-morning excursion to the spellbinding, rugged scenery of Lake Lagunillas. Afterwards visit Sumbay Caves, home to fascinating cave paintings that are estimated to be almost 8,000 years old. Return to the train for lunch as it continues to Arequipa. Here we bid farewell as you disembark, either for a panoramic city tour or for your transfer to the airport.

Please note: You may choose to leave the train early at Cañahuas and continue to explore Colca Canyon. A sweeping area of breathtaking beauty and one of the world's deepest canyons, you'll spot countless example of Inca and Pre-Inca architecture alongside alpacas, eagles and the mighty Andean condor. *Additional supplement applies.*



Pricing

Includes train accommodations, all meals described, and all included excursions. Some private excursions are possible at an additional cost.

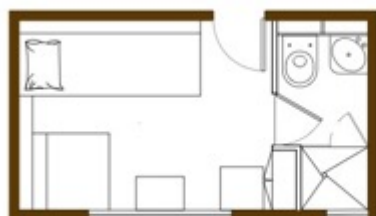
Bunk Bed Cabin	\$2,250 per person Double	\$3,940 per person Single
Twin Bed Cabin	\$2,450 per person Double	\$4,290 per person Single
Suite	\$2,700 per person Double	\$4,725 per person Single

Train Facts & Figures

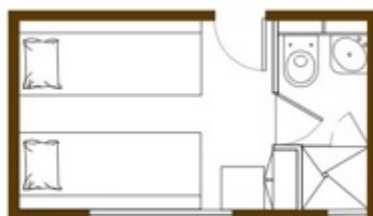
111. S. Dakota Avenue | **Luxury Latin America Travel**
 Tampa FL 33606 USA | www.almazjourneys.com

Max number of guests	48
Dining cars	2
Observation Car	1
Lounge Car	1
Spa car	1
Deluxe Double Bed Cabins	2
Junior Double Bed Cabins	6
Twin Bed Cabins	11
Bunk Bed Cabins	5

CABINS



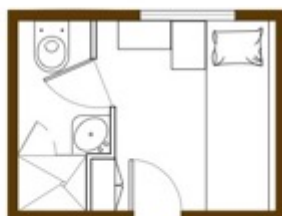
DAY CONFIGURATION



NIGHT CONFIGURATION

TWIN BED CABINS

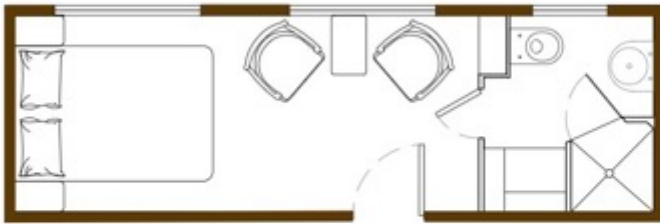
- Larger en-suite cabins with day and night configuration, all lower level
- 2 single beds, side by side in night position
- 1 banquette and one seat in day position
- Wardrobe
- Shower, washbasin, WC
- Total area of each compartment:
3.6 metres x 2.05 metres = 7.4 m²



BUNK BED CABINS

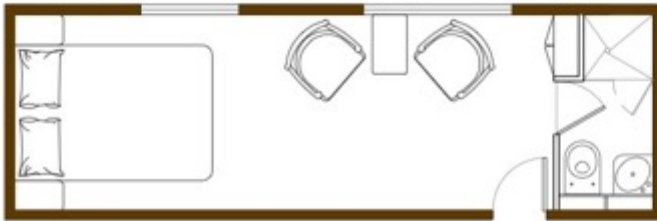
- Smaller en-suite cabins with over and under bunk-beds
- 2 single beds (upper and lower berth) night position
- Banquette in day position
- Wardrobe
- Shower, washbasin, WC
- Total area of each compartment:
2.7 metres x 2.05 metres = 5.5 m²

CABINS



DELUXE DOUBLE BED CABINS

- Largest en-suite cabins on the train with double bed
- Sitting area (2 seats table)
- Long wardrobe
- Shower, pedestal, washbasin, vanity, WC.
- Total area of each compartment:
6.4 metres x 2.05 metres = 13.1 m²



JUNIOR DOUBLE BED CABINS

- Largest en-suite cabins on the train with double bed
- Sitting area (2 seats table)
- Wardrobe
- Shower, washbasin, WC.
- Total area of each compartment:
6.4 metres x 2.05 metres = 13.1 m²





111. S. Dakota Avenue | **Luxury Latin America Travel**
Tampa FL 33606 USA | www.almazjourneys.com