



Andean Explorer Train by Belmond

Spirit of the Andes Route

1 night: Puno-Cusco (Lake Titicaca), every Wednesday

Belmond (formerly Orient-Express) trains are synonymous with luxury and unforgettable memories, and their trains in Peru are no exception. Almaz Journeys is proud to offer these incomparable rail itineraries, and we can help you build these rail journeys into your custom, private journey to Peru.

Train journeys aboard the Belmond Andean Explorer promise countless memories to treasure.

Day 1 – Wednesday

Meet Andean Explorer in Puno, a charming town beside Lake Titicaca. Step aboard in the afternoon and take the opportunity to unwind in your plush cabin. Soon you'll be invited to one of the two sophisticated dining cars for lunch. A fine dining experience of refined Andean cuisine awaits.

Later on, disembark for an excursion through the scenic La Raya mountain range, an area of rugged and untamed natural beauty. Return to the train for tea and time at leisure. Soak up the scenery from the Observation Car, or perhaps get to know your fellow travelers over cocktails in the Lounge Car.

As evening descends, return to the restaurant car for a sensational dinner as the train continues on its journey into the Cusco region.

Day 2 - Thursday

Awake early to a delicious breakfast, the ideal way to prepare for the day ahead. Savor the panoramic views as the train journeys into Cusco, a colorful city that was once the capital of the Inca empire.

Continue your Peruvian journey by exploring more of Cusco or continuing onto the Sacred Valley for some active adventure. Almaz Journeys can help you find the perfect fit for you.



**Map of the Andean Explorer Complete Route
(this departure ends at Cusco)**



Pricing

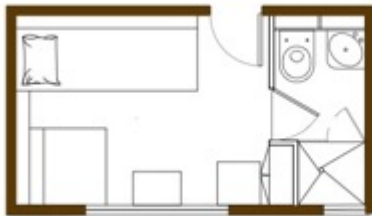
*Includes train accommodations, all meals described, and all included excursions.
Some private excursions are possible at an additional cost.*

Bunk Bed Cabin	\$850 per person Double	\$1,490 per person Single
Twin Bed Cabin	\$950 per person Double	\$1,665 per person Single
Suite	\$1,025 per person Double	\$1,795 per person Single

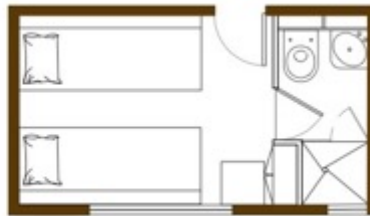
Facts & Figures

Max number of guests	48
Dining cars	2
Observation Car	1
Lounge Car	1
Spa car	1
Deluxe Double Bed Cabins	2
Junior Double Bed Cabins	6
Twin Bed Cabins	11
Bunk Bed Cabins	5

CABINS



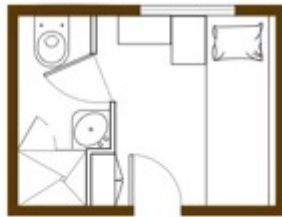
DAY CONFIGURATION



NIGHT CONFIGURATION

TWIN BED CABINS

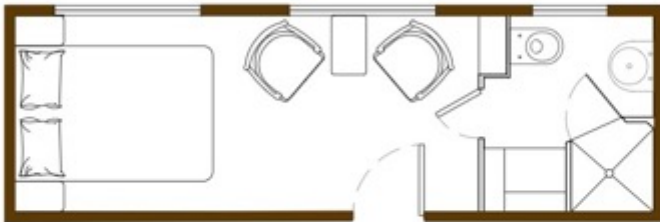
- Larger en-suite cabins with day and night configuration, all lower level
- 2 single beds, side by side in night position
- 1 banquette and one seat in day position
- Wardrobe
- Shower, washbasin, WC
- Total area of each compartment:
3.6 metres x 2.05 metres = 7.4 m²



BUNK BED CABINS

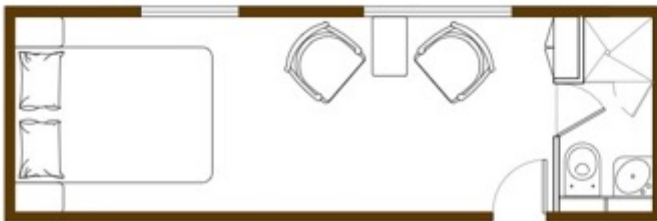
- Smaller en-suite cabins with over and under bunk-beds
- 2 single beds (upper and lower berth) night position
- Banquette in day position
- Wardrobe
- Shower, washbasin, WC
- Total area of each compartment:
2.7 metres x 2.05 metres = 5.5 m²

CABINS



DELUXE DOUBLE BED CABINS

- Largest en-suite cabins on the train with double bed
- Sitting area (2 seats table)
- Long wardrobe
- Shower, pedestal, washbasin, vanity, WC.
- Total area of each compartment:
6.4 metres x 2.05 metres = 13.1 m²



JUNIOR DOUBLE BED CABINS

- Largest en-suite cabins on the train with double bed
- Sitting area (2 seats table)
- Wardrobe
- Shower, washbasin, WC.
- Total area of each compartment:
6.4 metres x 2.05 metres = 13.1 m²





111. S. Dakota Avenue | **Luxury Latin America Travel**
Tampa FL 33606 USA | www.almazjourneys.com