



Andean Explorer Train by Belmond

Spirit of the Water Route

1 night: Cusco-Puno (Lake Titicaca), every Tuesday

Belmond (formerly Orient-Express) trains are synonymous with luxury and unforgettable memories, and their trains in Peru are no exception. Almaz Journeys is proud to offer these incomparable rail itineraries, and we can help you build these rail journeys into your custom, private journey to Peru.

Be swept up in the beauty of Lake Titicaca, the stunning final destination as you travel from Cusco to Puno. Train journeys aboard the Belmond Andean Explorer promise countless memories to treasure. Then, if you have time, we suggest you extend your stay on for a few nights on Lake Titicaca at the luxurious boutique Hotel Titilaka.

Day 1 – Tuesday

Board the train in Cusco, the former capital of the Inca Empire. Settle into your private cabin, and take the time to relax into the indulgent atmosphere of the train. Perhaps head to the Observation Car, order a classic Pisco Sour, and watch the scenery unfold. Later, take a seat in one of the two sophisticated dining cars for a delicious lunch. Anticipate refined Andean specialties served with contemporary flair.

As the afternoon continues, disembark for an excursion to Raqch'i. Once a defensive stronghold of the Inca Empire, today the area is a captivating archaeological site brimming with history. Return to the train for afternoon tea as your journey southeast continues. As evening descends, savor a picturesque sunset framed by the majestic La Raya mountains. As the train continues to Lake Titicaca station, enjoy a delicious dinner on board. Complete your evening in the Lounge Car: trade stories with your fellow travelers before retiring to the comfort of your cabin.

Day 2 - Wednesday

Awake early to catch the breathtaking sunrise across Lake Titicaca, before enjoying a delicious breakfast on board. After a wonderful overnight trip, bid the crew farewell and continue with your onward travel arrangements. Alternatively, an additional tour of Lake Titicaca, including the islands of Uros and Taquile, can be arranged at an additional supplement.

Or, stay a couple nights at the luxurious Hotel Titilaka, to relax and enjoy exclusive experiences on and near Lake Titicaca away from the crowds, before returning home via Lima. Almaz Journeys can help you find the perfect fit for you.



**Map of the Andean Explorer Complete Route
(this departure ends at Puno)**



Pricing

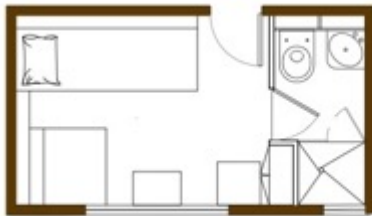
*Includes train accommodations, all meals described, and all included excursions.
Some private excursions are possible at an additional cost.*

| | | |
|----------------|---------------------------|---------------------------|
| Bunk Bed Cabin | \$925 per person Double | \$1,620 per person Single |
| Twin Bed Cabin | \$1,025 per person Double | \$1,795 per person Single |
| Suite | \$1,100 per person Double | \$1,925 per person Single |

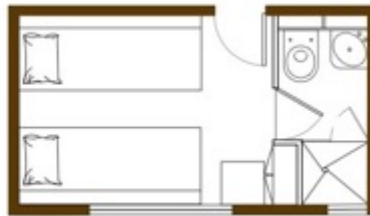
Facts & Figures

| | |
|--------------------------|----|
| Max number of guests | 48 |
| Dining cars | 2 |
| Observation Car | 1 |
| Lounge Car | 1 |
| Spa car | 1 |
| Deluxe Double Bed Cabins | 2 |
| Junior Double Bed Cabins | 6 |
| Twin Bed Cabins | 11 |
| Bunk Bed Cabins | 5 |

CABINS



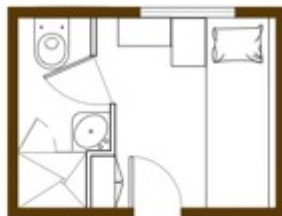
DAY CONFIGURATION



NIGHT CONFIGURATION

TWIN BED CABINS

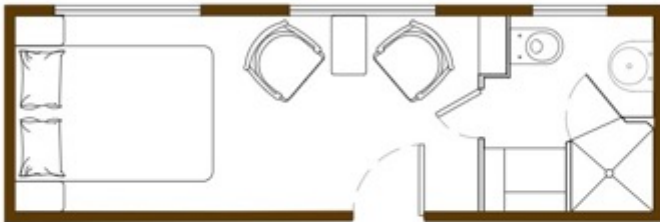
- Larger en-suite cabins with day and night configuration, all lower level
- 2 single beds, side by side in night position
- 1 banquette and one seat in day position
- Wardrobe
- Shower, washbasin, WC
- Total area of each compartment:
3.6 metres x 2.05 metres = 7.4 m²



BUNK BED CABINS

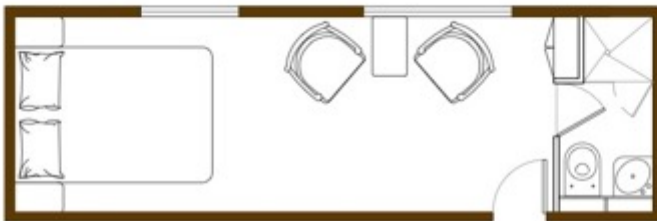
- Smaller en-suite cabins with over and under bunk-beds
- 2 single beds (upper and lower berth) night position
- Banquette in day position
- Wardrobe
- Shower, washbasin, WC
- Total area of each compartment:
2.7 metres x 2.05 metres = 5.5 m²

CABINS



DELUXE DOUBLE BED CABINS

- Largest en-suite cabins on the train with double bed
- Sitting area (2 seats table)
- Long wardrobe
- Shower, pedestal, washbasin, vanity, WC.
- Total area of each compartment:
6.4 metres x 2.05 metres = 13.1 m²



JUNIOR DOUBLE BED CABINS

- Largest en-suite cabins on the train with double bed
- Sitting area (2 seats table)
- Wardrobe
- Shower, washbasin, WC.
- Total area of each compartment:
6.4 metres x 2.05 metres = 13.1 m²





111. S. Dakota Avenue | **Luxury Latin America Travel**
Tampa FL 33606 USA | www.almazjourneys.com